

1.

#WIZARDWORKSFROMHOME SIMPLE TOOL ROLL



CUT ON OUTSIDE OF BLACK LINE

#WIZARDV

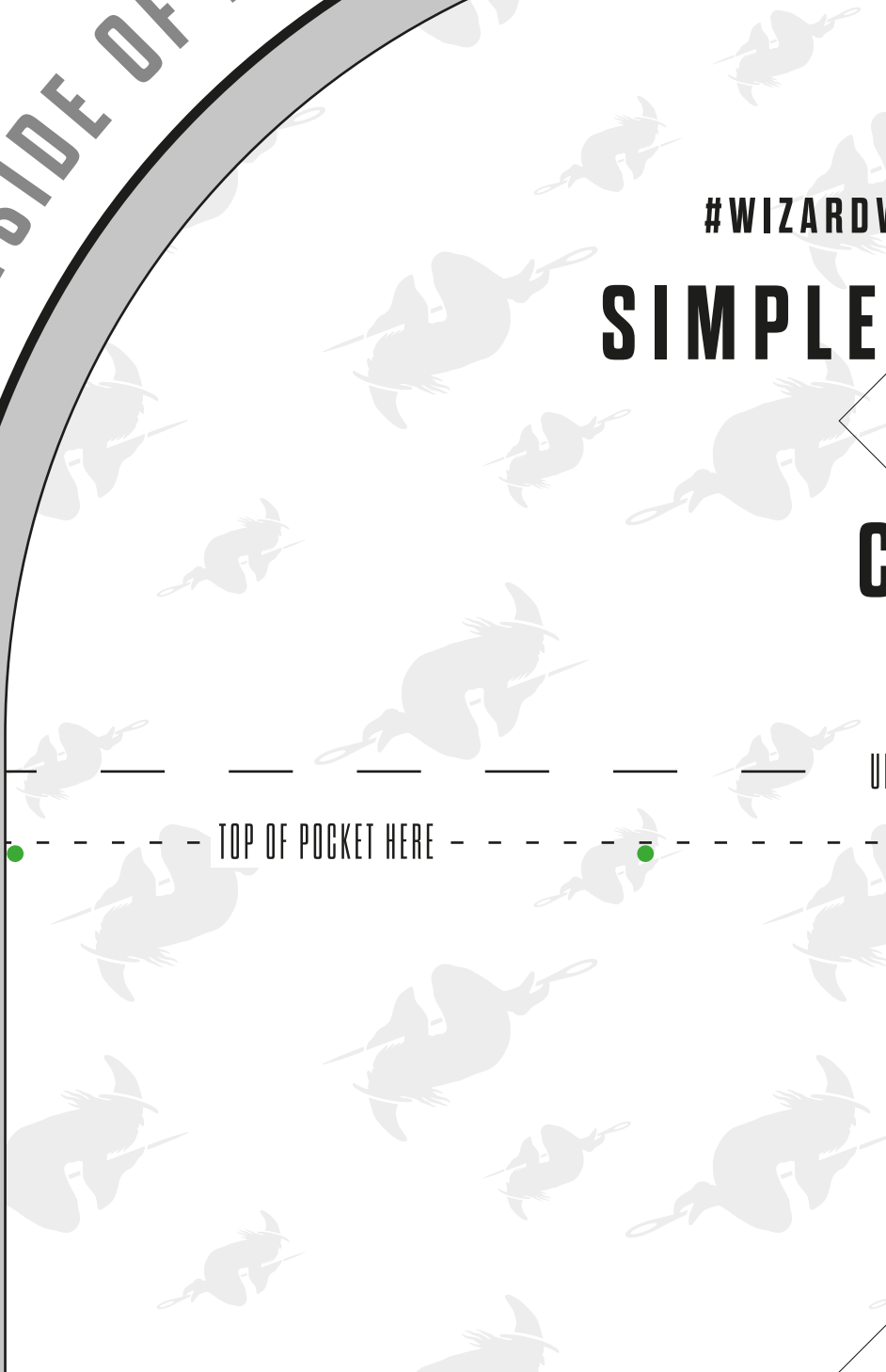
SIMPLE

C

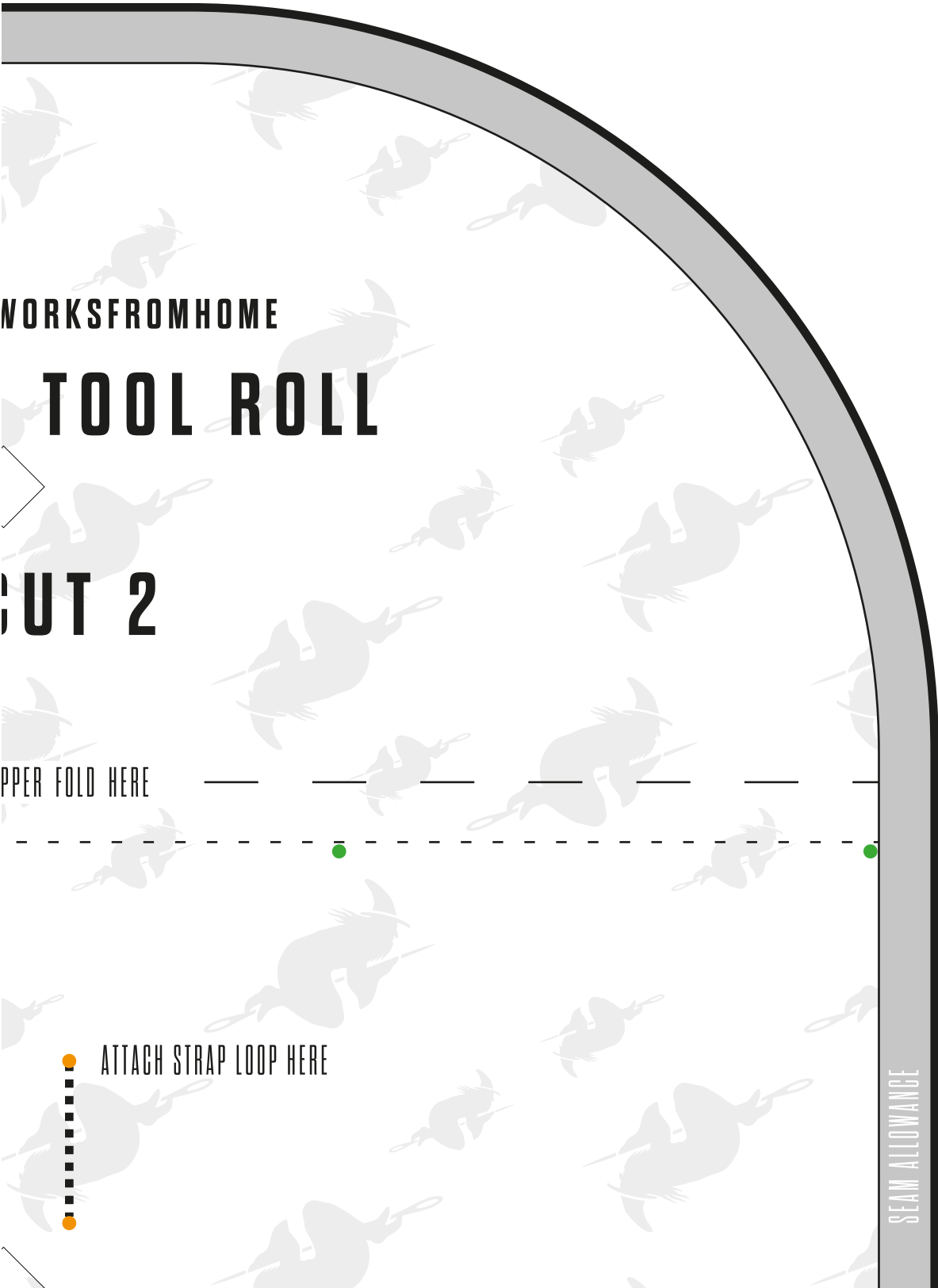
U

TOP OF POCKET HERE

SEAM ALLOWANCE



2. #WIZARDWORKSFROMHOME SIMPLE TOOL ROLL



WORKSFROMHOME

TOOL ROLL

CUT 2

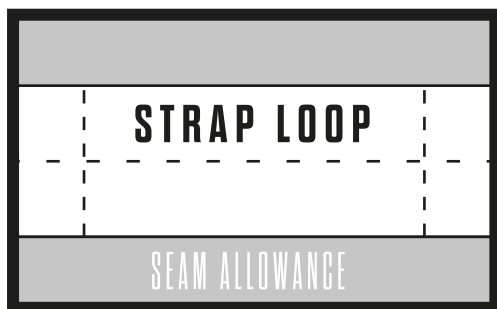
UPPER FOLD HERE

ATTACH STRAP LOOP HERE

SEAM ALLOWANCE

3. #WIZARDWORKSFROMHOME SIMPLE TOOL ROLL

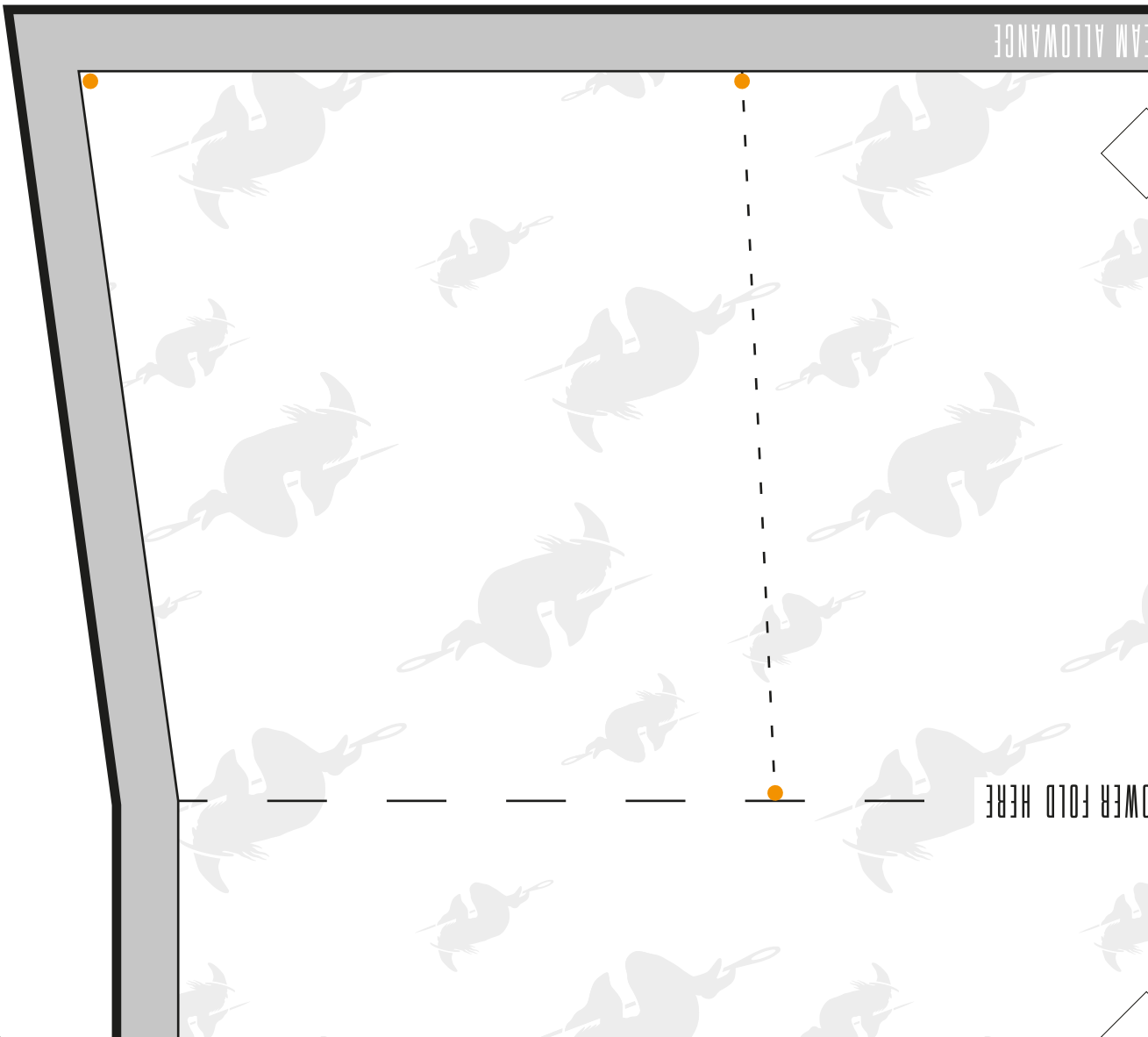
0cm 1cm 2cm 3cm 4cm 5cm



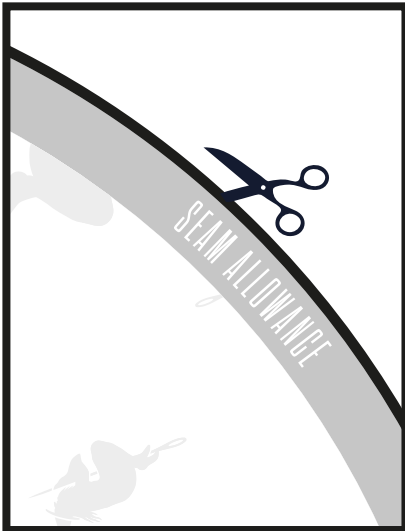
CUT 1



4. #WIZARDWORKSFROMHOME SIMPLE TOOL ROLL

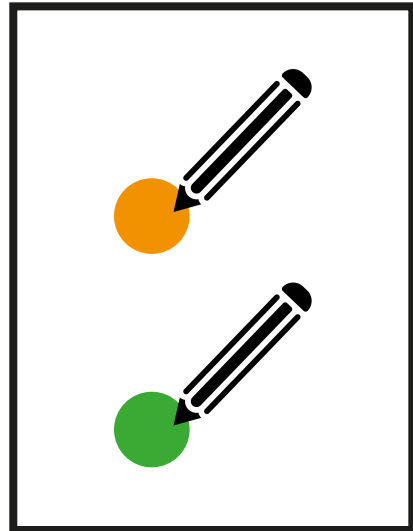


INSTRUCTIONS



Cut out Pattern outside of
Fat Black Line

Grey indicates 1cm of
seam allowance



Mark Orange Dots on Shell
Fabric

Mark Green dots on Lining
Fabric

Things you will need

Fabric
A Strap
Scissors / Rotary Cutter
Pencil / Pen / Pins for marking
Pins / Clips

This Simple Tool Roll is designed to require very little special equipment. You can use any fabric you have lying around or upcycle some disused garment or furnishing, heavier fabrics will provide a more hardwearing Tool Roll. For the strap you can use something from a bag, a loose strap you have or even a piece of string. If you want to get real snazzy how about a Voile Strap?



Cut Out the Pattern

1. Cut out the pattern pieces from this document. You will need 1x Strap Loop and 2x Main Tool Roll, one for lining and one for the shell
2. Loop and 2x Main Tool Roll, one for lining and one for the shell
3. Mark the position of the 4 Green Dots on the face of the lining fabric
4. Mark the position of the 8 Orange Dots on the face of the shell fabric



7. #WIZARDWORKSFROMHOME SIMPLE TOOL ROLL

Assemble the Tool Roll body

5. Sew the Lining and Shell right sides together at the 1cm seam allowance. Make sure to leave a hole so you can turn the item right side out
6. Clip the pointy corners at 45 degree angle
Cut triangle pieces from the curved edges, to remove weight from the outside of the curve
7. Turn right side out and press
8. Edgestitch all around, including over the hole you have left



Create the Strap Loop

9. Fold at centre line, right sides together, press and pin if necessary
10. Sew down the seam allowance
11. Turn right side out, and set aside (You might want to use a safety pin to feed the end through, or something slim like a pencil to push the end through)

This will only work with light fabrics, turning a stiffer fabric right side out will make you cry. In the case of having a heavier weight fabric (denim or heavier) you can sew wrong sides together and press. You can zigzag the raw edge to keep it tidy if you so wish.



Final Assembly

12. Fold edges of The Strap Loop under and sew onto the Shell side of the Tool Roll
13. Fold Tool Roll, and pin the dots together.
14. Edgestitch up sides
15. Topstitch the two pocket lines, between the dots

Voila! You have your very own Tool Roll. Using your strap you can now close it up, or even secure it under your saddle.

